



Vertebral column

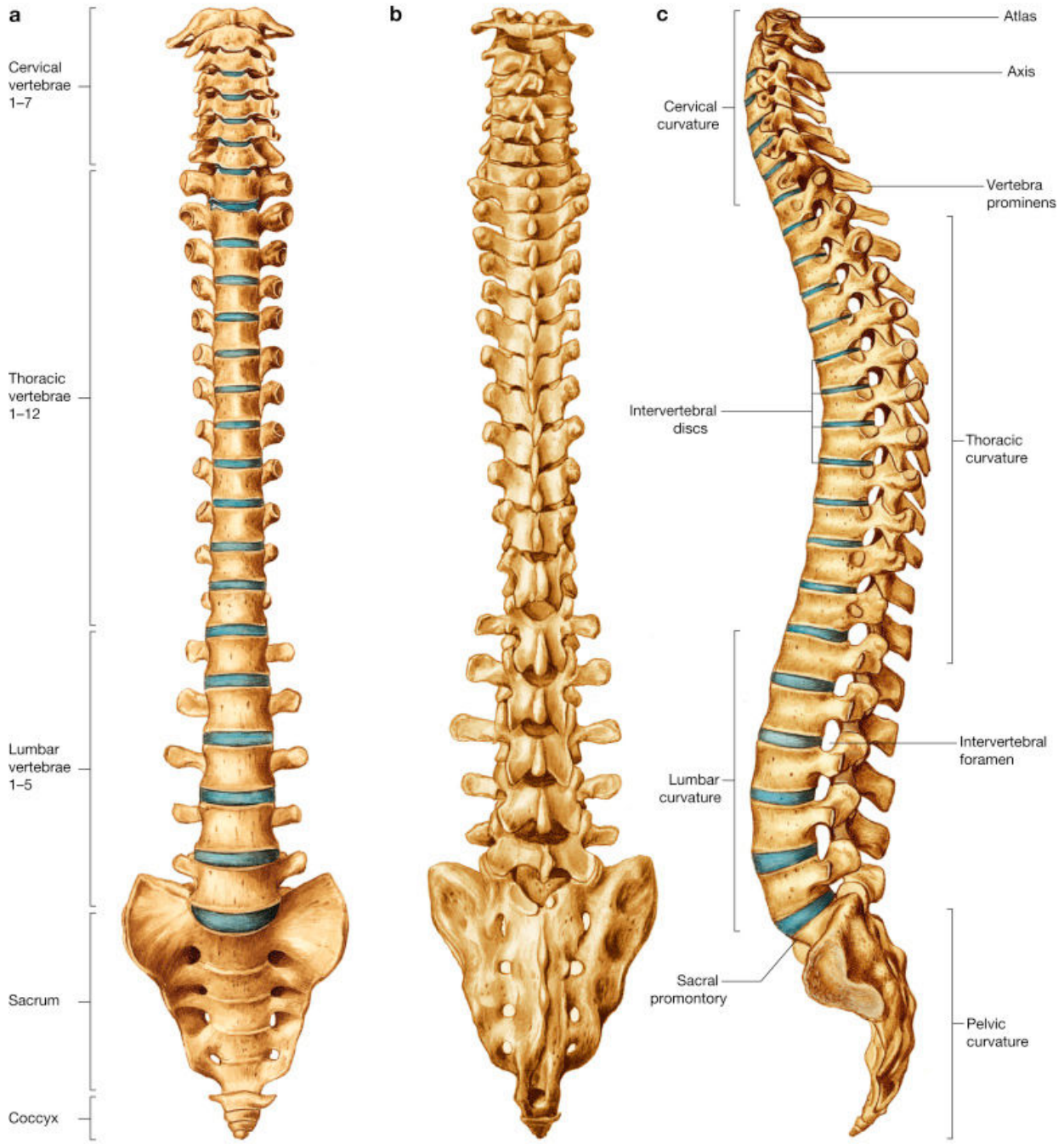
Anatomy Department
Beni-Suef University

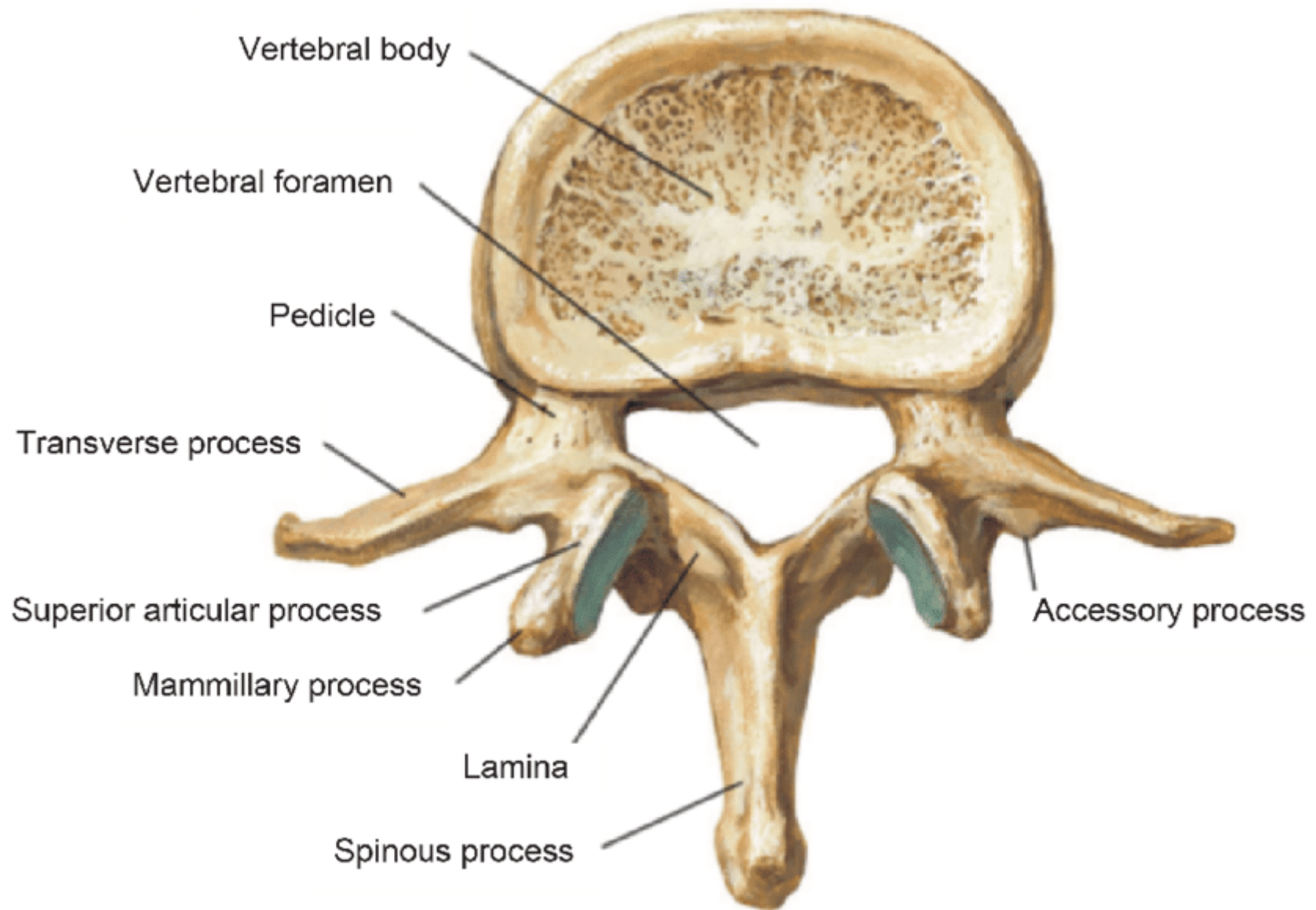
Intended learning objectives (ILOs)

By the end of this lecture the student will be able to:

1. Describe the length, functions and structure of the vertebral column.
2. Describe the intervertebral disc.
3. Identify parts of the typical vertebra.

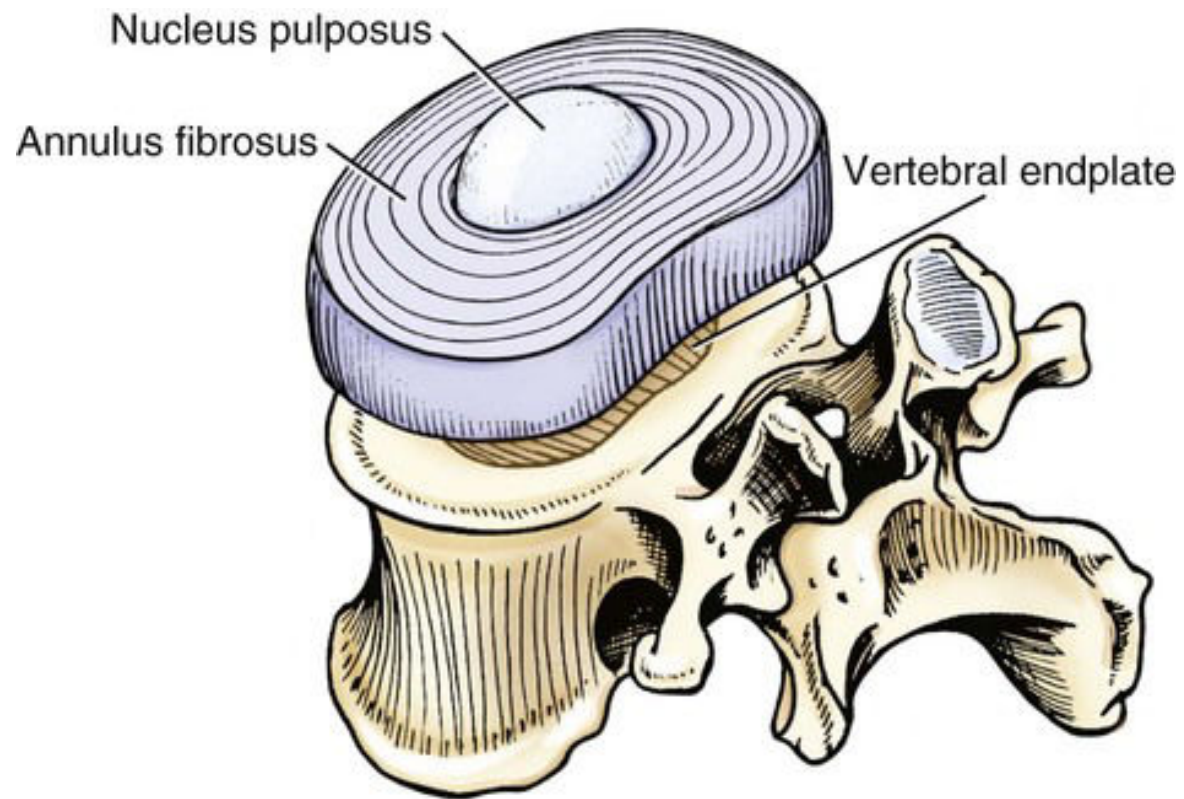
- Average length: 70 cm in males, 60 cm in females
- Functions
- Structure of vertebral column: 7 cervical, 12 thoracic, 5 lumbar, 5 sacral & 1 coccyx





**L2 vertebra:
superior view**

Intervertebral disc



Quiz

1. Regarding the average length of adult male vertebral column, one is correct:

- a. 100 cms
- b. 50 cms
- c. 40 cms
- d. 70 cms

2. Regarding the average length of female vertebral column, one is correct:

- a. 70 cms
- b. 65 cms
- c. 50 cms
- d. 55 cms
- e. 60 cms

3. The adult vertebral column typically contains

a. 26 vertebrae

b. 28 vertebrae

c. 30 vertebrae

d. 32 vertebrae

4. The typical vertebra contains

a. 4 processes

b. 5 processes

c. 6 processes

d. 7 processes

e. 8 processes

Thank you